
A decorative graphic on the left side of the slide, consisting of a vertical line of small circles connected by thin lines, resembling a circuit board or a stylized tree structure.

WORLD CUP –RELAY 27.1.

TEAM OFFICIALS MEETING

A decorative graphic on the left side of the slide, consisting of a vertical line of small circles connected by thin lines, resembling a circuit board or a stylized tree structure.

ROLL-CALL

- Austria
 - Bulgaria
 - Czech Rep.
 - Estonia
 - Finland
 - Germany
 - Kazakhstan
 - Latvia
 - Lithuania
 - Norway
 - Romania
 - Russian Fed.
 - Slovakia
 - Sweden
 - Switzerland
- 
- A decorative graphic on the right side of the slide, consisting of a vertical line of small circles connected by thin lines, resembling a circuit board or a stylized tree structure.

OFFICIALS

- Officials:
 - Event director: Bernd Kohlschmidt
Diethard Kundisch
 - National Controller: Wolfgang Pötsch
 - Course setter: Renate Trösse
 - Event Adviser: Milan Venhoda
- Jury members:
 - NOR –
 - SUI –
 - USA –

TIME SCHEDULE

- 10:30 – mass start men
- 10:35 – mass start women
- 12:30 – price giving ceremony – in arena

MAP

- 1:10.000, E 5 m
- size A4
- printed on synthetic paper Pretex

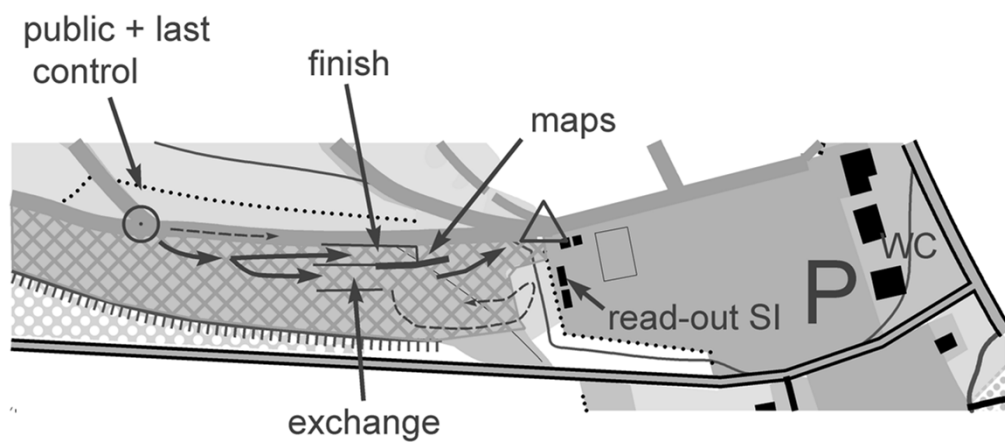
COURSES

- Women:
 - 5,2 km, shortest sensible route choice 7,5km, no. of controls 13, climbing 120 m
- Men:
 - 7,4 km, shortest sensible route choice 10,5 km, no. of controls 13, climbing 150 m

TRACK / TERRAIN

- 75 % full line - wide track
- 20 % dashed line - made by ski-doo
- 5 % dotted line - made by skiers

COMPETITION CENTRE



START, SIAC

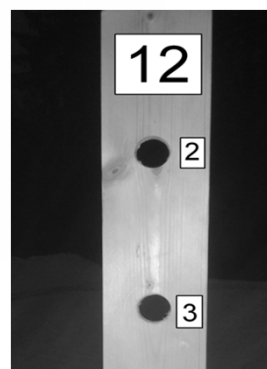
- Same procedure as in sprint relay
- Clear an check of SIAC occurs at check-in for own responsibility.
- Maps are handed out to the athletes between 90 and 45 seconds before the start.
- Athletes have to keep the map into their hand behind the back until command "MAP" is given 15s before the start. Start "GO" will be given.
- For the first approximately 50m only double pooling is allowed.

EXCHANGE

- Exchange by touch in exchange area – beginning and end line marked on snow with red color spray
- After exchange punch finish station
- Then go to the read-out of SIAC.

MAP EXCHANGE

- Maps for 2-3 leg are curled up into rolls and inserted into the holes in the map wall. Diameter of the holes is about 4 cm. Competitors **start numbers are shown on the map and on the wall above the map.** There will be staff supervised map exchange
- Maps for start nr. 1 are last in row

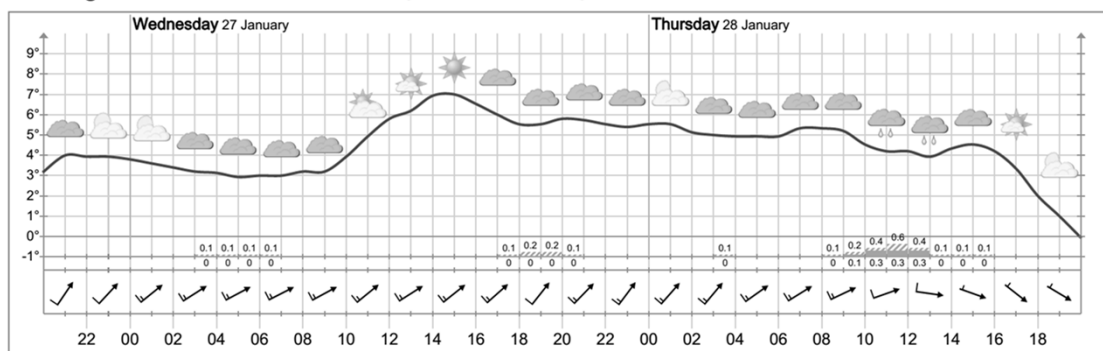


FINISH

- Finish (3rd leg) has separate lane – no punching at the finish line. The finish time is taken when the competitor pass the marked finish line.

WEATHER FORECAST

Meteogram for Mühleithen Tuesday 20:00 to Thursday 20:00



GOOD LUCK